

# MONTHLY MEMBERSHIP PROGRESS REPORT

LOCATION ILLINOIS

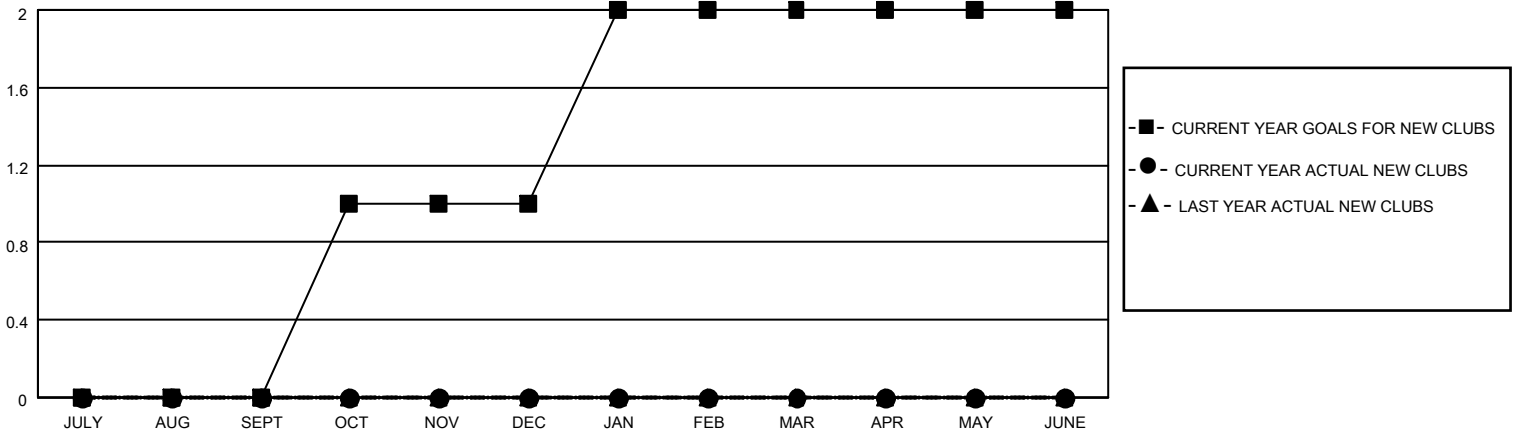
District 1 M

Results as of: 5/31/2022

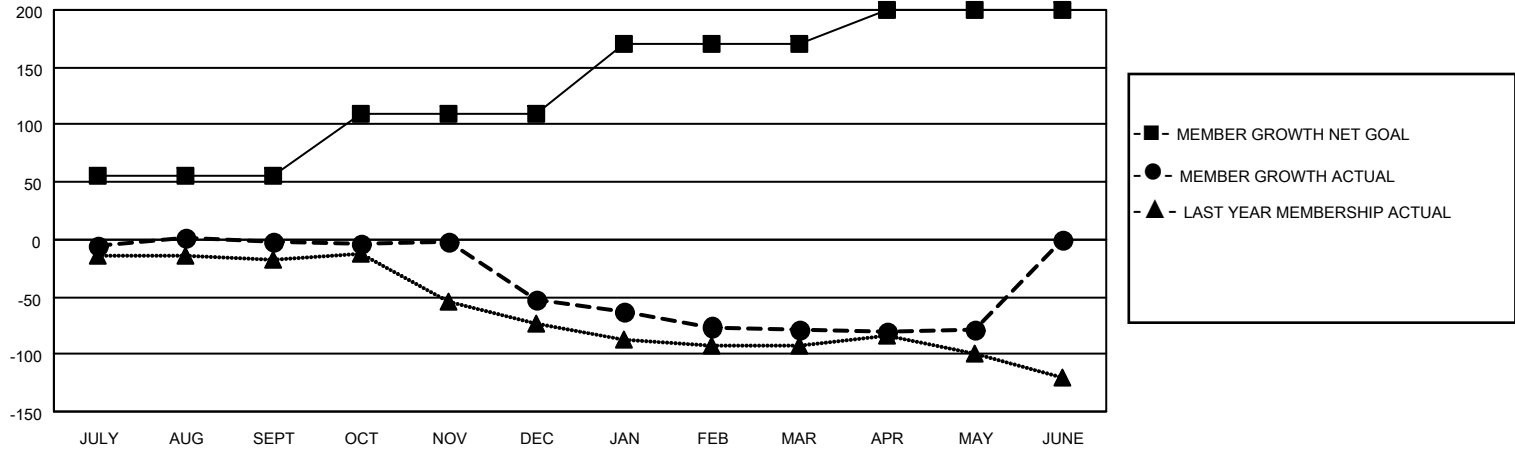
Clubs			
RESULTS FOR 2021-2022			
QUARTER	NEW CLUB GOAL	NEW CLUBS	DROPPED CLUBS
JULY/AUG/SEPT	0	0	1
OCT/NOV/DEC	1	0	1
JAN/FEB/MAR	1	0	1
APR/MAY/JUNE	0	0	0

Members			
RESULTS FOR 2021-2022			
QUARTER	MEMBER GROWTH NET GOAL	MEMBER GROWTH ACTUAL	DROPPED MEMBERS ACTUAL (including transfers)
JULY/AUG/SEPT	55	33	31
OCT/NOV/DEC	55	18	68
JAN/FEB/MAR	60	14	39
APR/MAY/JUNE	30	19	15

**GOALS AND ACTUAL NEW CLUBS CUMULATIVE**



**GOALS AND ACTUAL MEMBERS CUMULATIVE**



<b>DROPPED CLUBS: 3</b>	
<b>DROPPED MEMBERS</b>	
DECEASED	21
CLUB CANCELLED	0
OTHER	132
<b>TOTAL</b>	<b>153</b>

33 CLUBS OF 57 ADDED 1 OR MORE NEW MEMBERS

[CLICK HERE FOR CUMULATIVE MEMBERSHIP DATA](#)

<u>GENDER DISTRIBUTION</u>	
MALE	1,051 (80.11%)
FEMALE	261 (19.89%)
NON BINARY	0 (0.00%)
PREFER NOT TO ANSWER	0 (0.00%)
TOTAL FAMILY UNIT MEMBERS	131
FAMILY MEMBERS PAYING HALF DUES	67